

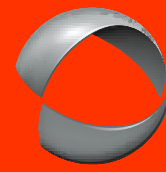


DISPLAY SOLUTIONS



Contents

- About AOPEN p.3
- Non-Touch Displays p.4-7
- Touch Displays p.8-11
- Videowall Displays p.12-13
- Bar Type Displays p.14-15



AOPEN

Bright Ideas Connected

AOPEN Inc., based in Taiwan with offices in America, Europe, Asia and the Pacific is the leading manufacturer of digital signage solutions worldwide. AOPEN continues to expand its products and services for digital signage and other vertical application markets. With in-depth market knowledge, AOPEN can offer advice for complete digital signage platform solutions. AOPEN has cultivated a sophisticated ecosystem of premium solution providers to offer its solutions via its value added channel network to the market.

We now use our expertise and technology to transform highly technical products into easy-to-use, accessible digital communications solutions to support integrators, partners and end customers.

Whether your business operates in healthcare, hospitality, transportation, security or education; AOPEN solutions will enable you to turn concepts into reality.





Leave it on 24/7

The AOPEN DSD range is designed for continuous use; each component is carefully chosen and rigorously tested to offer the utmost in both durability and reliability.

As a result this is a solution that will benefit some of the most demanding commercial environments such as retail and banking outlets, digital signage, out of home advertising, menu boards and critical call and data centers.

Fan-free with advanced thermal controls

The DSD range boasts a thermal architecture which maintains core temperature while being completely solid state. This means it does not need fans which can fail, draw dust/ oils, create noise and cause ambient heat issues, none of which is desirable in a commercial environment.

Instead, the display maintains the viewer experience by making use of thermal mechanisms to protect against overheating by adjusting the backlight to compensate for heating, and then notifying the monitoring tool via RS232.

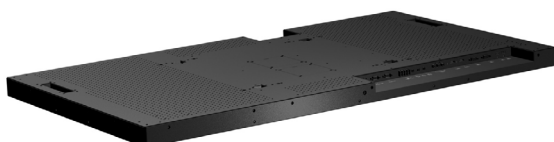


DSD:	DSD42-HE
Type	E-LED Panel
Size	42"
Dimension	962 x 555 x 52 mm
Slim Bezel	11.8 mm
Weight	16.7 kg
Display Orientation	Portrait / Landscape
Mounting Options	Wall
Mounting Type	VESA FDMI : 400x300
Resolution	1920x1080
Pixel Pitch	0.4845x0.4845
Brightness	500 nits
Viewing Angle	178/178
Contrast Ratio	4000:1
Response Time (Average)	8ms
Features	+ Narrow Bezel: 11.8 mm + Fanless + Thermal Alarm & Protection + RS232 Remote Control
I/O Port	+ AC inlet x1 / AC outlet x1 + HDMI x2 + VGA x2 + RS231 in x1 / RS232 out x1 + Audio in x2 / Audio out x1 + Speaker line out R/L
AC Input / Output	+ AC Input : 100~240VAC; + AC Output: 100~240VAC
Power Consumption (Max.)	110W
Touch Screen	NA
Temperature	+ Operating: 0° to 40° + Storage: -20° to 60°
Humidity	10~80% R.H. max

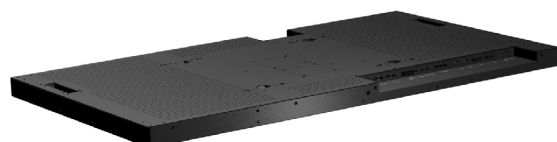


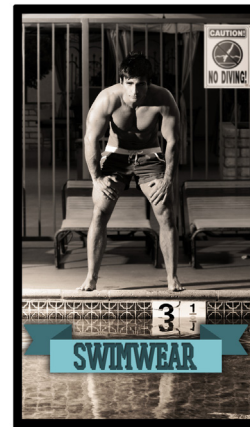


DSD:	DSD55-HE
Type	E-LED Panel
Size	55"
Dimension	1239 x 710 x 49 mm
Slim Bezel	11.8 mm
Weight	28 kg
Display Orientation	Portrait / Landscape
Mounting Options	Wall
Mounting Type	VESA FDMI : 500x400 / 300x400
Resolution	1920x1080
Pixel Pitch	0.21x0.63
Brightness	450 nits
Viewing Angle	178/178
Contrast Ratio	4000:1
Response Time (Average)	6.5ms
Features	+ Narrow Bezel: 11.8 mm + Fanless + Thermal Alarm & Protection + RS232 Remote Control
I/O Port	+ AC inlet x1 / AC outlet x1 + HDMI x2 + VGA x2 + RS231 in x1 / RS232 out x1 + Audio in x2 / Audio out x1 + Speaker line out R/L
AC Input / Output	+ AC Input : 100~240VAC; + AC Output: 100~240VAC
Power Consumption (Max.)	120W
Touch Screen	NA
Temperature	+ Operating: 0° to 40° + Storage: -20° to 60°
Humidity	10~80% R.H. max



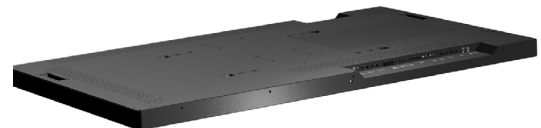
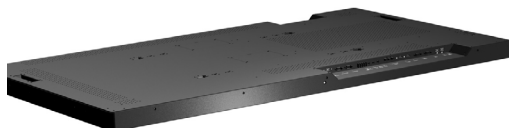
Pro DSD:	DSD55-HE2
Type	E-LED Panel
Size	55"
Dimension	1239 x 710 x 49 mm
Slim Bezel	11.8 mm
Weight	28 kg
Display Orientation	Portrait / Landscape
Mounting Options	Wall
Mounting Type	VESA FDMI : 500x400 / 300x400
Resolution	1920x1080
Pixel Pitch	0.21x0.63
Brightness	700 nits
Viewing Angle	178/178
Contrast Ratio	4000:1
Response Time (Average)	6.5 ms
Features	+ Narrow Bezel: 11.8 mm + Fanless + Thermal Alarm & Protection + RS232 Remote Control
I/O Port	+ AC inlet x1 / AC outlet x1 + HDMI x2 + VGA x2 + RS231 in x1 / RS232 out x1 + Audio in x2 / Audio out x1 + Speaker line out R/L
AC Input / Output	+ AC Input : 100~240VAC; + AC Output: 100~240VAC
Power Consumption (Max.)	120W
Touch Screen	NA
Temperature	+ Operating: 0° to 40° + Storage: -20° to 60°
Humidity	10~80% R.H. max





DSD:	DSD65-HE
Type	E-LED Panel
Size	65"
Dimension	1512 x 882 x 58 mm
Slim Bezel	L\R : 36 mm T\B : 34 mm
Weight	47.5 kg
Display Orientation	Portrait / Landscape
Mounting Options	Wall
Mounting Type	VESA FDMI : 500x400 / 400x400
Resolution	1920x1080
Pixel Pitch	0.744x0.744
Brightness	450 nits
Viewing Angle	178/178
Contrast Ratio	4000:1
Response Time (Average)	8 ms
Features	+ Fanless + Thermal Alarm & Protection + RS232 Remote Control
I/O Port	+ AC inlet x1 / AC outlet x1 + HDMI x2 + VGA x2 + RS231 in x1 / RS232 out x1 + Audio in x2 / Audio out x1 + Speaker line out R/L
AC Input / Output	+ AC Input : 100~240VAC; + AC Output: 100~240VAC
Power Consumption (Max.)	240W
Touch Screen	NA
Temperature	+ Operating: 0° to 40° + Storage: -20° to 60°
Humidity	10~80% R.H. max

Pro DSD:	DSD65-HE2
Type	E-LED Panel
Size	65"
Dimension	1512 x 882 x 58 mm
Slim Bezel	L\R : 36 mm T\B : 34 mm
Weight	47.5 kg
Display Orientation	Portrait / Landscape
Mounting Options	Wall
Mounting Type	VESA FDMI : 500x400 / 400x400
Resolution	1920x1080
Pixel Pitch	0.744x0.744
Brightness	700 nits
Viewing Angle	178/178
Contrast Ratio	4000:1
Response Time (Average)	8 ms
Features	+ Fanless + Thermal Alarm & Protection + RS232 Remote Control
I/O Port	+ AC inlet x1 / AC outlet x1 + HDMI x2 + VGA x2 + RS231 in x1 / RS232 out x1 + Audio in x2 / Audio out x1 + Speaker line out R/L
AC Input / Output	+ AC Input : 100~240VAC; + AC Output: 100~240VAC
Power Consumption (Max.)	245W
Touch Screen	NA
Temperature	+ Operating: 0° to 40° + Storage: -20° to 60°
Humidity	10~80% R.H. max





Easy to maintain

The DSD has external fuses which protect the LCD from damage. In the event a fuse is blown due to power disturbance or event, the user can simply select the alternate power input or change the fuse without removing or dismantling the screen. The fuse is standard be found in most supermarkets or electronic outlets.

The DSD can be managed both remotely or onsite via the software tool kit allowing the user or helpdesk to determine the situation and plan maintenance.

Image Retention

Have Menu Boards or Exchange rate boards?

The DSD range is designed for continuous use and has a built-in software suite which aids in the prevention of image sticking, which is ideal for static media such as menu boards and timetables.

Image prevention works by turning off pixels which are static periodically to prevent permanent damage. The strength and frequency of these protection measures can be adjusted through the DSD screen control suite.



Use touch to engage directly with customers

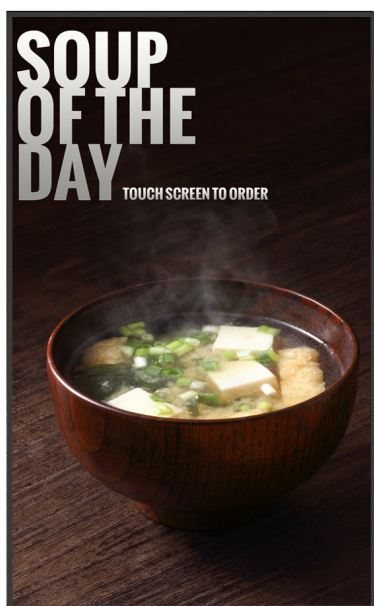
The DSD range has various touch options to enhance the user experience. Touch technologies including IR, Optical and PCT can be built into DSD displays to suit budget performance and, equally, the most demanding needs.

All touch options are integrated natively into the displays and feature:

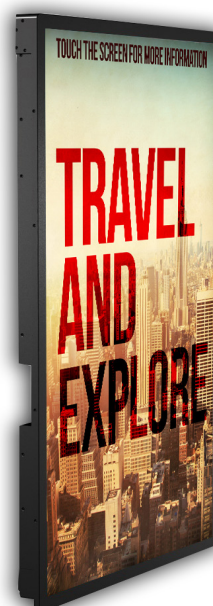
- + Higher degree of accuracy
- + No unreliable overlays
- + Control to the viewable screen edge
- + No alignment and fitment issue
- + Increased reliability
- + Scratch proof to ensure touch will still operate with scratches on glass
- + Optional glass types for anti-glare and standard protection glass

The DSD range of touch screens also include models the support Windows 7, 8, Android and Linux.

TOUCH
DISPLAY



TOUCH
DISPLAY



DSD:	DSD42-HE-T
Type	E-LED Panel
Size	42"
Dimension	1004 x 599 x 69.1 mm
Slim Bezel	33 mm
Weight	25.1 kg
Display Orientation	Portrait / Landscape
Mounting Options	Wall
Mounting Type	VESA FDMI : 400x300
Resolution	1920x1080
Pixel Pitch	0.4845x0.4845
Brightness	500 nits
Viewing Angle	178/178
Contrast Ratio	4000:1
Response Time (Average)	8 ms
Features	+ Fanless + Thermal Alarm & Protection + RS232 Remote Control
I/O Port	+ AC inlet x1 / AC outlet x1 + HDMI x2 + VGA x2 + RS231 in x1 / RS232 out x1 + Audio in x2 / Audio out x1 + Speaker line out R/L
AC Input / Output	+ AC Input : 100~240VAC; + AC Output: 100~240VAC
Power Consumption (Max.)	110W
Touch Screen	2 point, IR Touch USB interface
Tempered Glass	AG+AF Tempered, 3 mm
Temperature	+ Operating: 0° to 40° + Storage: -20° to 60°
Humidity	10~80% R.H. max

DSD:	DSD55-HE-T
Type	E-LED Panel
Size	55"
Dimension	1286 x 755 x 67.2
Slim Bezel	34.8 mm
Weight	40 kg
Display Orientation	Portrait / Landscape
Mounting Options	Wall
Mounting Type	VESA FDMI : 500x400 / 300x400
Resolution	1920x1080
Pixel Pitch	0.21x0.63
Brightness	450 nits
Viewing Angle	178/178
Contrast Ratio	4000:1
Response Time (Average)	6.5 ms
Features	+ Fanless + Thermal Alarm & Protection + RS232 Remote Control
I/O Port	+ AC inlet x1 / AC outlet x1 + HDMI x2 + VGA x2 + RS231 in x1 / RS232 out x1 + Audio in x2 / Audio out x1 + Speaker line out R/L
AC Input / Output	+ AC Input : 100~240VAC; + AC Output: 100~240VAC
Power Consumption (Max.)	120W
Touch Screen	2 points, IR touch USB Interface
Tempered Glass	AG +AF Tempered, 4 mm
Temperature	+ Operating: 0° to 40° + Storage: -20° to 60°
Humidity	10~80% R.H. max

TOUCH
DISPLAY



Pro DSD:	DSD55-HE2-T
Type	E-LED Panel
Size	55"
Dimension	1286 x 755 x 67.2 mm
Slim Bezel	34.8 mm
Weight	40 kg
Display Orientation	Portrait / Landscape
Mounting Options	Wall
Mounting Type	VESA FDMI : 500x400 / 300x400
Resolution	1920x1080
Pixel Pitch	0.21x0.63
Brightness	700 nits
Viewing Angle	178/178
Contrast Ratio	4000:1
Response Time (Average)	6.5 ms
Features	+ Fanless + Thermal Alarm & Protection + RS232 Remote Control
I/O Port	+ AC inlet x1 / AC outlet x1 + HDMI x2 + VGA x2 + RS231 in x1 / RS232 out x1 + Audio in x2 / Audio out x1 + Speaker line out R/L
AC Input / Output	+ AC Input : 100~240VAC; + AC Output: 100~240VAC
Power Consumption (Max.)	120W
Touch Screen	2 points, IR touch USB interface
Tempered Glass	AG+AF Tempered, 4 mm
Temperature	+ Operating: 0° to 40° + Storage: -20° to 60°
Humidity	10~80% R.H. max





"The ultimate in display technology"

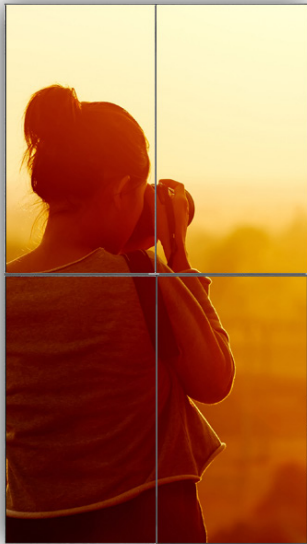


DSD:	DSD46-VE
Type	D-LED Panel
Size	46"
Dimension	1024 x 579 x 112 mm
Slim Bezel	L\T : 3.5 mm R\B : 2.1 mm
Weight	20.5 kg
Display Orientation	Portrait / Landscape
Mounting Options	Wall
Mounting Type	VESA FDMI : 400x400 / 300x400
Resolution	1920x1080
Pixel Pitch	0.53x0.53
Brightness	450 nits
Viewing Angle	178/178
Contrast Ratio	3500:1
Response Time (Average)	6.5 ms
Features	+ Super Narrow Bezel + Video Wall Support + Auto Fan Control + RS232 Remote Control
I/O Port	+ AC inlet x1 / AC outlet x1 + HDMI x1 + VGA x1 + DVI x1 + Video Component x1 + Video Composite x1 + S-Video x1 + RS231 in x1 / RS232 out x1 + Audio in x2 + Speaker line out R/L
AC Input / Output	+ AC Input : 100~240VAC; + AC Output: 100~240VAC
Power Consumption (Max.)	115W
Touch Screen	NA
Temperature	+ Operating: 0° to 40° + Storage: -20° to 60°
Humidity	10~80% R.H. max

Video Wall DSD

Aopen Video wall are amongst the worlds thinnest measurement and 1.8mm*, and come in 450 nits and 700 nits, for that stunning image and can be used in a multitude of configurations.

*Thinnest Side



DSD:	DSD46-VE2
Type	D-LED Panel
Size	46"
Dimension	1024 x 579 x 112 mm
Slim Bezel	L\T : 3.5 mm R\B : 2.1 mm
Weight	20.5 kg
Display Orientation	Portrait / Landscape
Mounting Options	Wall
Mounting Type	VESA FDMI : 400x400 / 300x400
Resolution	1920x1080
Pixel Pitch	0.53x0.53
Brightness	700 nits
Viewing Angle	178/178
Contrast Ratio	4000:1
Response Time (Average)	6.5 ms
Features	+ Super Narrow Bezel + Video Wall Support + Auto Fan Control + RS232 Remote Control
I/O Port	+ AC inlet x1 / AC outlet x1 + HDMI x1 + VGA x1 + DVI x1 + Video Component x1 + Video Composite x1 + S-Video x1 + RS231 in x1 / RS232 out x1 + Audio in x2 + Speaker line out R/L
AC Input / Output	+ AC Input : 100~240VAC; + AC Output: 100~240VAC
Power Consumption (Max.)	140W
Touch Screen	NA
Temperature	+ Operating: 0° to 40° + Storage: -20° to 60°
Humidity	10~80% R.H. max

DSD:	DSD55-VE2
Type	D-LED Panel
Size	55"
Dimension	1215.2 x 686 x 87.15 mm
Slim Bezel	U\L : 3.4 mm D\B : 1.9 mm
Weight	36 kg
Display Orientation	Portrait / Landscape
Mounting Options	Wall
Mounting Type	VESA FDMI : 500x400 / 300x400
Resolution	1920x1080
Pixel Pitch	0.63x0.63
Brightness	800 nits
Viewing Angle	178/178
Contrast Ratio	1400:1
Response Time (Average)	10 ms
Features	+ Super Slim Bezel (5.3 seam) + Video Wall Matrix (up to 10x10) + OSD Support + RS232 Remote Control
I/O Port	+ AC inlet x1 / AC outlet x1 + HDMI x1 + VGA x1 + DVI x1 + Video Component x1 + Video Composite x1 + S-Video x1 + RS231 in x1 / RS232 out x1 + Audio in x2 + Speaker line out R/L
AC Input / Output	+ AC Input : 100~240VAC; + AC Output: 100~240VAC;
Power Consumption (Max.)	260W
Touch Screen	NA
Temperature	+ Operating: 0° to 50° + Storage: -20° to 60°
Humidity	90% R.H. max



Bar Type DSD change to 32:9 Bar type display

Bar type displays are used to complement the space and integrate seamlessly into fixtures and columns, the aopen bar type DSD maintain the screen quality and brightness in a format with greater flexibility ...





DSD:	DSD28-UW
Type	E-LED Panel
Size	28"
Dimension	737 x 168 x 45 mm
Slim Bezel	L/T : 18.5 mm R/B : 18.3 mm
Weight	4.2 kg
Display Orientation	Portrait / Landscape
Mounting Options	Wall
Mounting Type	VESA FDMI : 200x100
Resolution	1920x358
Pixel Pitch	0.36x0.36
Brightness	500 nits
Viewing Angle	176/176
Contrast Ratio	2000:1
Response Time (Average)	6.5 ms
Features	+ Bar Type + Video Wall Support 1x3
I/O Port	+ DC In x1 + VGA x1 + DVI x1 + Audio out x1
AC Input / Output	+ AC Input : 100~240VAC; By Adaptor
Power Consumption (Max.)	60W
Touch Screen	NA
Temperature	+ Operating: 0° to 40° Storage: -10° to 60°
Humidity	10~80% R.H. max



DSD:	DSD38-UW
Type	E-LED Panel
Size	38"
Dimension	981 x 304 x 45 mm
Slim Bezel	L/T : 24.4 mm R/B : 20.4 mm
Weight	6.3 kg
Display Orientation	Portrait / Landscape
Mounting Options	Wall
Mounting Type	VESA FDMI : 200x100
Resolution	1920x538
Pixel Pitch	0.4845x0.4845
Brightness	800 nits
Viewing Angle	176/176
Contrast Ratio	4000:1
Response Time (Average)	8 ms
Features	+ Bar Type + Video Wall Support 1x2
I/O Port	+ DC In x1 + VGA x1 + DVI x1 + Audio out x1
AC Input / Output	+ AC Input : 100~240VAC; By Adaptor
Power Consumption (Max.)	90W
Touch Screen	NA
Temperature	+ Operating: 0° to 40° Storage: -10° to 60°
Humidity	10~80% R.H. max



AOPEN North & South America

2890 Zanker Road, Suite 101
San Jose, CA 95134
USA

Tel: (+1) 408-586-1201

AOPEN Asia & Pacific

No.68, Ruiguang Rd.
Neihu District
Taipei, 114, Taiwan

Tel: (+886) 2 7710 1195

AOPEN Europe

Stadionlaan 151-153
5246 JT Rosmalen
The Netherlands

Tel: (+31) 73 646 6400

AOPEN China

NO. 1698, Yishan Road,
301 Room, Xing Di Building,
Shanghai, China

Tel: (+86) 216 225 8622

AOPEN Australia & New Zealand

Level 2, 6 Palmer Parade
Cremorne, Victoria
3121, Australia

Tel: (+61) 3 9427 7379

AOPEN Japan

3F, Imai-Building 3-2-14,
Sotokanda Chiyoda-ku, Tokyo
101-0021 Japan

Tel: (+81) 352 981 668