



**AOPEN**

Bright Ideas Connected

ALL-IN-ONE  
TOUCH DISPLAYS  
eTILE





# *Contents*

- About AOPEN p.3
- Integrated Touch Systems
  - + eTILE 15M p.4
  - + eTILE 19M p.5
  - + eTILE 19M Value SoC p.6
  - + eTILE 19M Value FanFREE p.7
  - + eTILE 19M Openframe p.8
  - + eTILE 19M Mid p.9
  - + eTILE 22M p.10
- Casestudy: Built for Retail







# AOPEN

Bright Ideas Connected

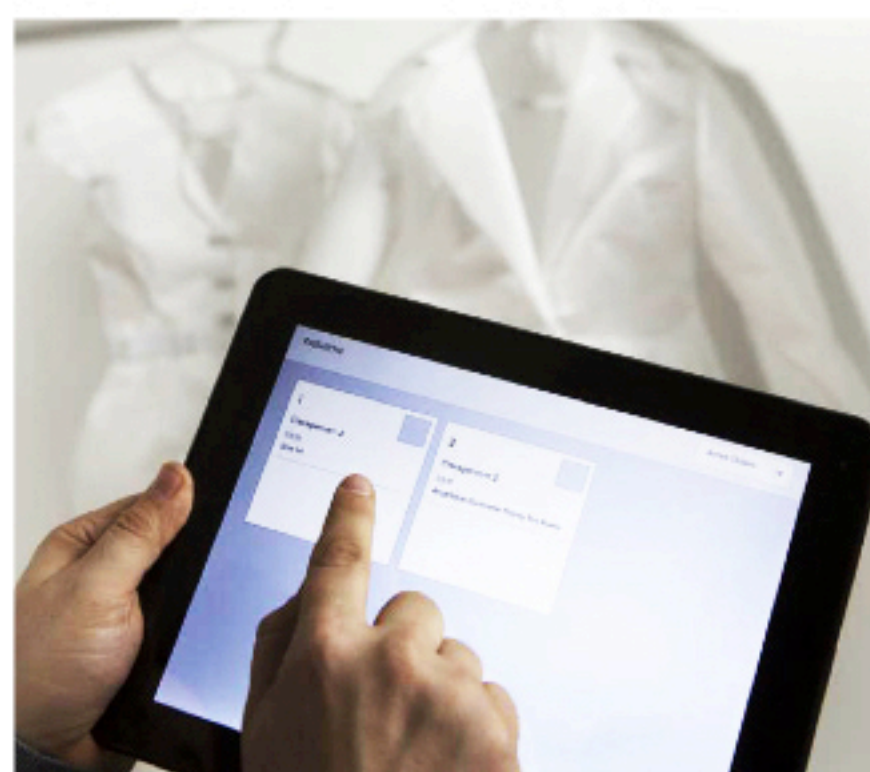
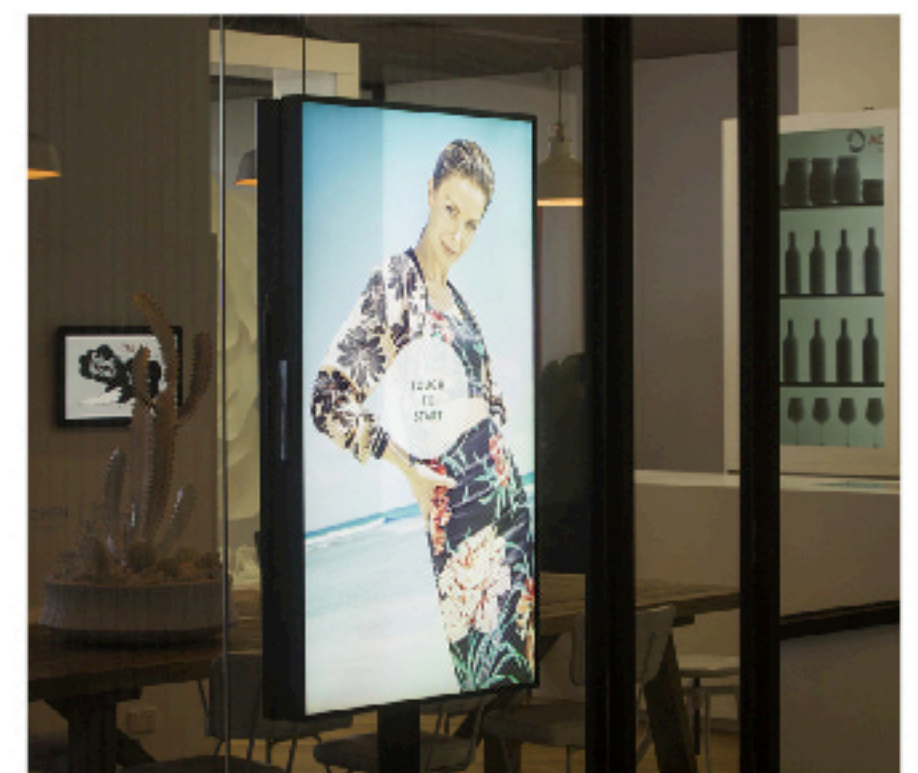
AOPEN is a leader in applied computing technology since 1996, providing digital signage and multimedia solutions for retail, transportation, automation, hospitality, medical, telecommunication and a host of other industry verticals.

Originally established as a business unit of Acer Computers, AOPEN has become a subsidiary of Wistron Group, one of the largest technology providers in the world with operations across the globe and over 50,000 employees. AOPEN Inc., is headquartered in Taiwan with local offices in America, Europe, Asia and the Pacific.

AOPEN specializes in small form factor computing and touch display technology for digital signage, kiosks and POS. As a leading manufacturer of digital signage hardware solutions worldwide, AOPEN continues to expand its products and solutions through innovation and customer demand.

When it comes to understanding the needs of vertical industries, our experience is unparalleled. The needs of retail are different to those of education or healthcare and our close engagement through both our channel business and direct customers allows us to tailor the ideal solution to suit any business.

At AOPEN, we are firmly focused on sustainability. We manufacture durable products for reliable, green and powerful computing, offering our channel of professional AV and electronic system integrators a solid solution for any scenario.





# eTILE 15M

The eTILE 15M is an ultra-thin, ultra-powerful and multi-purpose 15.6" multitouch PC tile, based on Intel® Core™ Processor technology and built to perform in the most demanding commercial environments. The eTILE 15M is highly robust with built-in cable management so that no ports are visible to the customer, making the device totally secure and tamper proof.

- + Ideal for POS due to its small size
- + No necessity for an enclosure or kiosk
- + Low operating and installation costs
- + Robust PCT panel: dust and water proof (IP65)



35mm



## WT15M-FI

<b>Dimensions</b>	380.5 x 230 x 35 mm (W x H x D)	<b>Touch Panel</b>	PCT Multi Touch Surface (10 point touch) Pencil Hardness 7H per ASTM D3363 Pen Hitting: more than 20,000,000 times (loading 180g)
<b>Weight</b>	3.5kg	<b>Speakers</b>	Built-in 2W Stereo Speaker
<b>Mass Storage</b>	2.5" SATA III HDD x1 (optional 2.5" SATA SSD x1)	<b>Webcam</b>	Built-in 1.0M
<b>CPU</b>	Intel® 2nd and 3rd generation Intel® Core™ i3, i5, i7 mobile processor TDP≤35W	<b>Security</b>	Hidden Keypad Magnetized/Secure cable and port cover
<b>Chipset</b>	Intel® QM77	<b>System I/O</b>	DC 19V Jack x1 RS232 Port (Monitor) x1 HDMI Out Port x1 RJ45 LAN Jack x1 USB2.0 x2 USB 3.0 x2 Line-out x1, Mic-in x1
<b>Memory</b>	Supports: 2 x DDRIII SO-DIMM (Max 8G)	<b>Front Panel</b>	IP65 grade Dust- & Waterproof
<b>LAN</b>	Single Intel Gigabit Ethernet 10/100/1000 Built-in WiFi antenna (optional Wi-Fi card b/g/n)	<b>Watchdog Timer</b>	1 sec ~ 255 sec
<b>Audio</b>	Realtek ALC886	<b>Accessories</b>	Wall Mount Kit x1 120W Power Adapter x1 Power Cord x1 Utilities & Drivers CD x1
<b>Mini-Card Slot</b>	Full size x1 (support mSATA), Half size x1		
<b>LCD</b>	Default Resolution : 15.6" (1920x1080) Maximum Brightness : 300 Nits		
<b>Aspect Ratio/Resolution</b>	16:9/Full HD		

Supports:





# eTILE 19M

The eTILE 19M is an ultra-thin and exceptionally powerful 18.5" multi-touch PC tile. Designed for commercial retail use, it also has a keen sense of style and aesthetic detail with a slick Piano Black construction that will enhance any shopper's user experience. It is the kind of device that will markedly improve the engagement between the customer and your brand as a result.

- + Ultra slim form factor (30mm)
- + Easy installation (wall mount kit included)
- + Low operating and installation costs
- + Robust PCT panel: dust and water proof (IP65)



30mm



## WT19M-FI

**Dimensions** 448 x 284 x 30 mm (W x H x D)

**Weight** 5kg

**Mass Storage** 2.5" SATA III HDD x1  
(optional 2.5" SATA SSD x1)

**CPU** Intel® 2nd and 3rd generation Intel® Core™ i3, i5, i7 mobile processor TDP≤35W

**Chipset** Intel® QM77

**Memory** Supports: 2 x DDRIII SO-DIMM (Max 8G)

**LAN** Single Intel Gigabit Ethernet  
10/100/1000  
Built-in WiFi antenna (optional Wi-Fi card b/g/n)

**Audio** Realtek ALC886

**Mini-Card Slot** Full size x1 (support mSATA), Half size x1

**LCD** Default Resolution : 18.5" (1366x768)  
Maximum Brightness : 250 Nits

**Aspect Ratio/Resolution** 16:9/HD-ready

### Touch Panel

PCT Multi Touch Surface (10 point touch)  
Pencil Hardness 7H per ASTM D3363  
Pen Hitting: more than 20,000,000 times (loading 180g)

### Speakers

Built-in 2W Stereo Speaker

### Webcam

Built-in 1.3M

### Security

Hidden keypad  
Secure Cable and port cover

### System I/O

DC 19.5V Jack x1  
RS232 Port (Monitor) x2  
HDMI Out Port x1  
RJ45 LAN Jack x1  
USB2.0 x2  
USB 3.0 x2  
Line-out x1, Mic-in x1

### Front Panel

IP65 grade Dust- & Waterproof

### Watchdog Timer

1 sec ~ 255 sec

### Accessories

Wall Mount Kit x1  
120W Power Adapter x1  
Power Cord x1  
Utilities & Drivers CD x1

Supports:







# eTILE 19M Value SoC

The eTILE 19M Value SoC is an ultra-thin Android based SoC (System on Chip) multi-touch display. Designed to accommodate use in a variety of sectors, this diverse eTILE has a hidden navigation bar to avoid user tampering thus making this device a perfect solution for versatile use.

- + Possibility for customized BSP (Board Specific Package)
- + Special features for signage market such as a hidden navigation bar and APAR (Automatic Power on After AC Recovery)
- + Low Power consumption due to ARM based SoC platform.



## WT19M-FF

**Dimensions** 448 x 284 x 30 mm (WxHxD)

**Weight** 4.56 kg/10.05 lbs

**Storage** eMMC 8G on board, Supports Micro SD

**CPU** Freescale Cortex™-A9 i.MX6, QuadCore 1.0GHz  
**Memory** 2GB DDR3 on-board memory (up to 2GB)

**LAN** Single Ethernet 10/100/1000

**Audio** SGTL 5000

**LCD** Display Size: 18.5"  
Resolution: 1366x768 (16:9)  
Maximum Brightness: 250 Nits

**Aspect Ratio/  
Resolution** 16:9

Z

**Touch Panel**

Projected Capacitive Touch (10 point touch)  
Pencil Hardness 7H per ASTM D3363

**Speakers**

Built-in 2W Stereo Speaker

**Webcam**

1 MP webcam

**Security**

Hidden keypad  
Secure cable and port cover

**System I/O**

DC Jack: x1  
HDMI Out Port (mini): x1  
USB 2.0: x4  
RJ45 LAN Jack: x1  
PC Legacy RS232 Serial Port: x2  
Audio Line-Out, 3.5mm: x1  
Audio Line-In, 3.5mm: x1

**Front Panel**

IP65 grade Dust- & Waterproof

**Watchdog  
Timer**

1 sec ~ 255 sec

**Accessories**

Wall Mount Kit x1  
65W Power Adapter x1  
Power Cord x1

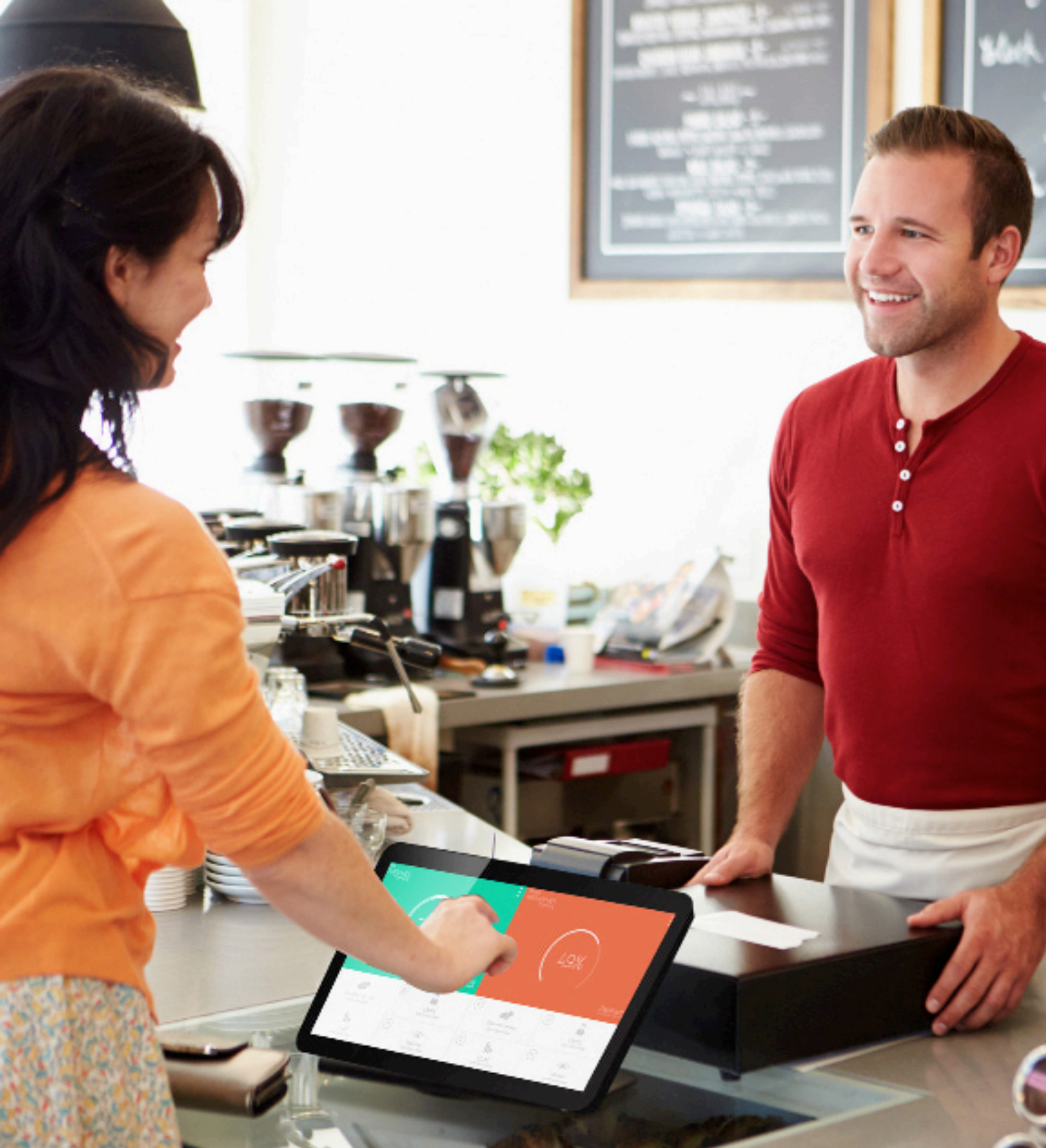
**Adapter**

65W (19V, 3.42A) AC Adapter

Supports:



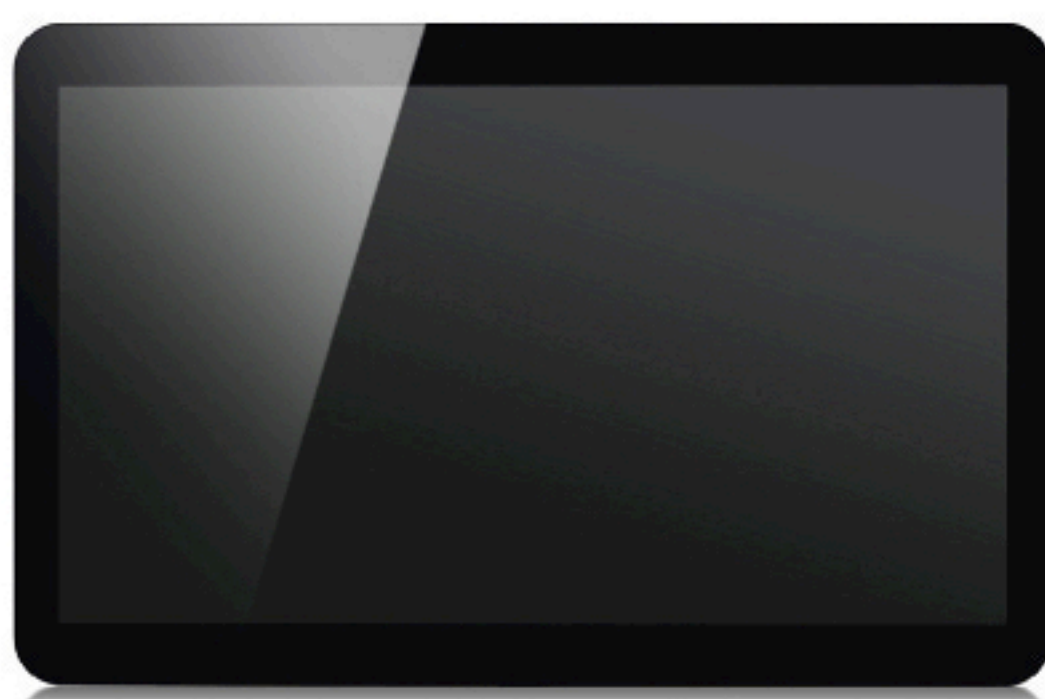




# eTILE 19M Value Fanfree

The eTILE 19M Value FanFree is a fanless 18.5" all-in-one touch display. Developed with POS in mind; this multi-touch tile can be integrated in various retail settings. Combining esthetically with practical features such as an USB with power, makes this eTILE the perfect retail solutions.

- + A fanless, silent all-in-one interactive display
- + USB with power for auxiliary devices such as scanners and printers up to 1A per USB connection.
- + Modular RJ50 connector for RS232 connection (voltage configurable)



## WT19M-FB

<b>Dimensions</b>	448 x 284 x 30 mm (WxHxD)	<b>Touch Panel</b>	PCT (Project Capacity Touch (10 point touch) Pencil hardness: 7H per ASTM D3363
<b>Weight</b>	5 kg	<b>Security</b>	Hidden keypad Secure cable cover
<b>Storage</b>	Supports 2.5" SATA III HDD/SSD (HDD enclosure not included) and mSATA Default 32G mSATA SSD	<b>System I/O</b>	DC 12V -19.5V input: x1 HDMI Out Port (mini): x1 USB 2.0 (1A): x4 RJ45 LAN Jack: x1 RS232 Serial RJ50 (Voltage Configurable): x4 Audio Line-Out: x1 Audio Line-In: x1
<b>CPU</b>	Intel® N2930	<b>Front Panel</b>	IP65 grade Dust- & Waterproof
<b>Memory</b>	Supports: 2 x DRIII SO-DIMM (Max 8G) Default 2Gx1	<b>Watchdog Timer</b>	1 sec ~ 255 sec
<b>LAN</b>	Realtek RTL8111G Ethernet 10/100/1000	<b>Accessories</b>	Wall Mount Kit x1 90W Power Adapter x1 Power Cord x1
<b>Audio</b>	Realtek ALC269-VC, Digital Multichannel HDMI	<b>Adapter</b>	90W (19.5V, 4.74A) AC Adapter
<b>LCD</b>	Display Size: 18.5" Resolution: 1366x768 (16:9) Maximum Brightness : 250 Nits		
<b>Aspect Ratio/Resolution</b>	16:9		

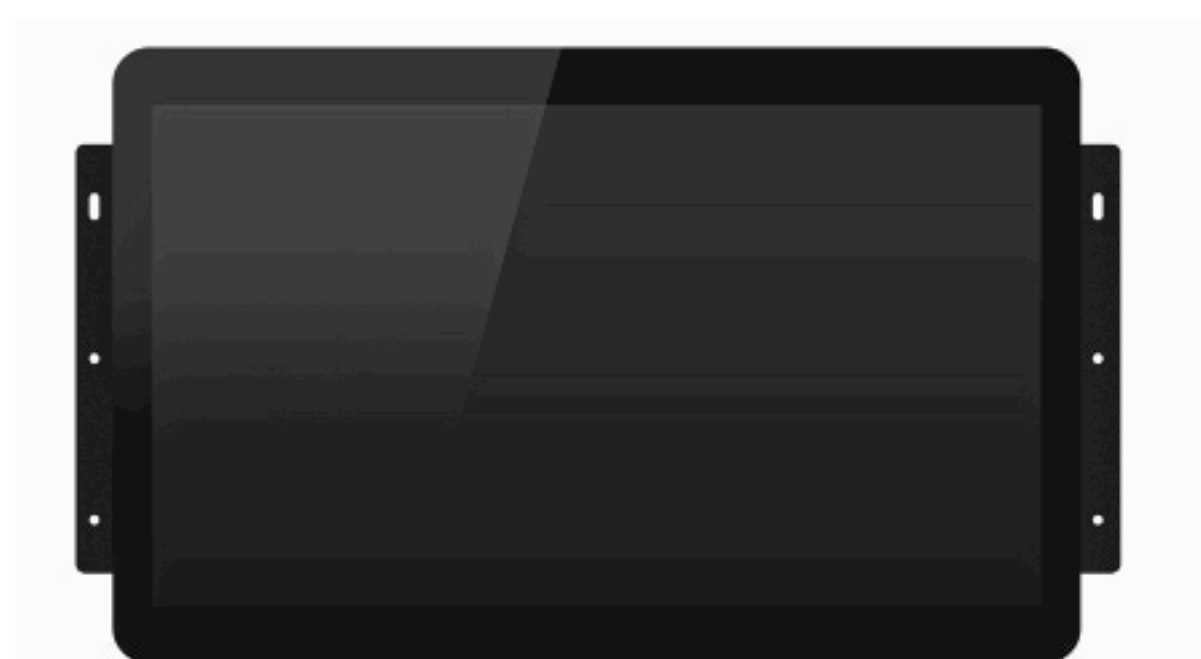




# eTILE 19M OpenFrame

The eTILE 19M OpenFrame is an 18.5" all-in-one touch display without back cover. With its thin form factor this display can be integrated in existing and new kiosk designs. The touch display front panel is water- and dustproof making it a solid solution for intensive use in various challenging commercial environments.

- + Cost-effective solution for interactive kiosk market
- + Watchdog timer included
- + Environmentally friendly



## WT19M-HI

<b>Dimensions</b>	448 x 284 x 30 mm (WxHxD)	<b>Touch Panel</b>	Projected Capacitive Touch (4 point touch) Pencil Hardness 7H per ASTM D3363
<b>Weight</b>	4.2 kg / 9.3 lbs	<b>Graphics</b>	Intel® HD Graphic series depending on the CPU
<b>Storage</b>	Default configuration: N/A Supports 2.5" SATA III HDD/SSD and mSATA	<b>Adapter</b>	90W (19V, 4.74A) AC Adapter
<b>CPU</b>	Supports Intel® Sandy Bridge and Ivy bridge CPU (Default configuration B980)	<b>System I/O</b>	RS232 Port: 2x (optional power, 12V/5V, 1A, default disabled) USB 2.0: x2 (each port supports 5V/2A) USB 3.0: x2 (each port supports 5V/2A) GbE LAN RJ45: x1 Audio in: x1 Audio out: x1 DC input: Supports 12V to 19.5V HDMI Out Port: x1
<b>Chipset</b>	Intel® HM76 chipset		
<b>Memory</b>	Max Memory 8GB		
<b>LAN</b>	Intel Gb LAN- W82579LM Single Ethernet 10/100/1000 Mbps		
<b>Audio</b>	2 channel analog, Max 7.1 channel via HDMI	<b>Front Panel</b>	IP65 Grade
<b>Mini-Card Slot</b>	Full size x1, Half size x1 (optional: Wi-Fi, Digital TV tuner card)	<b>Watchdog Timer</b>	1 sec ~ 255 sec
<b>LCD</b>	Default Resolution: 18.5" (1366x768) Maximum Brightness: 250 Nits	<b>Accessories</b>	Wall Mount Kit 90W Power Adapter Power Cord
<b>Aspect Ratio/Resolution</b>	16:9		

Supports:

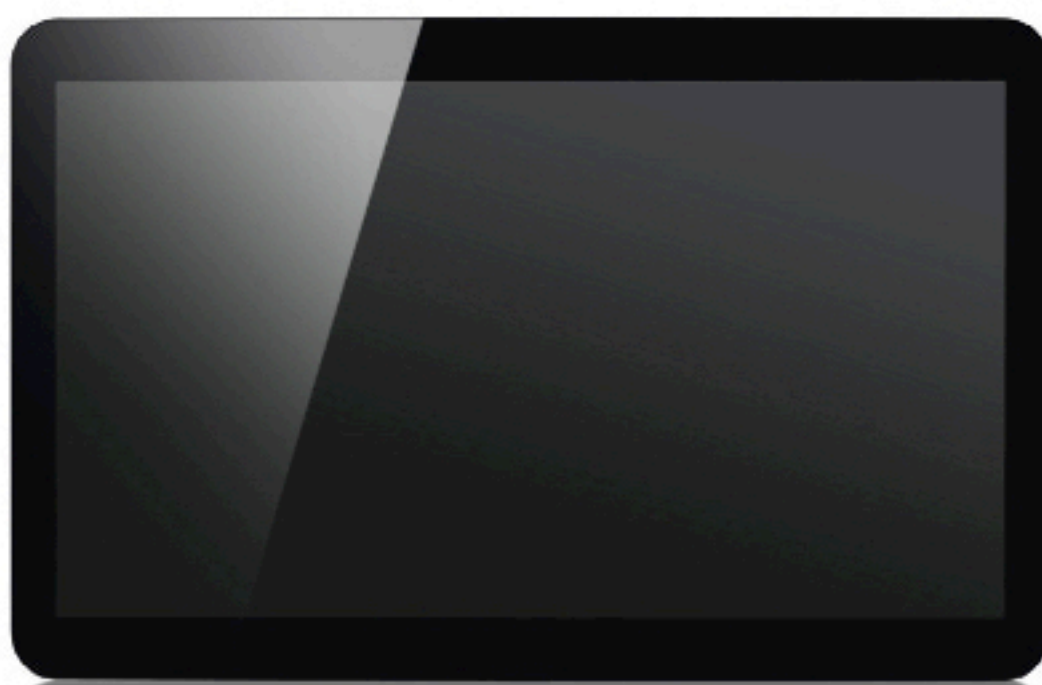




# eTILE 19M Mid

The eTILE 19M Mid is a 18.5" multi-touch PC tile, running on the cost-effective Intel® HM76 chipset. This eTILE is developed with the commercial retail and kiosk market in mind. This device gives you the chance to target your audience and enhance the relationship between customer and brand.

- + Low operating and installation costs
- + Robust construction for 24/7 operability
- + Environmentally friendly due to low energy consumption



## WT19M-HI

**Dimensions** 448 x 284 x 30.4 mm (WxHxD)

**Weight** 5 kg

**CPU** Supports Intel® CPU (Default configuration B980)

**Chipset** Intel® HM76 chipset

**Memory** DDRIII 2GB x2 Max Memory 8GB

**LAN** Intel Gb LAN- W82579LM  
Single Ethernet 10/100/1000 Mbps

**Audio** 2 channel analog, multichannel via HDMI

**Mini-Card Slot** Full size x1 (support mSATA), Half size x1

**LCD** Default Resolution : 18.5" (1366x768)  
Maximum Brightness : 250 Nits

**Aspect Ratio/Resolution** 16:9

## Touch Panel

Projected Capacitive Touch (4 Points)  
Pencil Hardness = 7H per ASTM D3363

## Speakers

Built-in 2W Stereo Speaker

## Security

Hidden keypad  
Secure cable and port cover

## System I/O

DC 19V Jack: x1  
HDMI Port: x1  
USB 2.0: x2  
USB 3.0: x2  
RJ45 LAN Jack: x1  
PC Legacy RS232 Serial Port: x2  
Audio Line-Out: x1  
Audio Line-In: x1

## Front Panel

IP65 grade Dust- & Waterproof

## Watchdog Timer

1 sec ~ 255 sec

## Accessories

Wall Mount Kit x1  
90W Power Adapter x1  
Power Cord x1

Supports:





# eTILE 22M

The eTILE 22M is an ultra-thin commercial interactive all-in-one touch panel. Based on 3rd Generation Intel® Core™ technology, this powerful dynamic PC tile will enhance the interactive experience. Furthermore it incorporates a high quality 16:9 Full HD 21.5" LCD screen with a lockable screen keypad to minimize user tampering.

- + Ultra slim form factor (33mm)
- + Wide viewing angle VA panel
- + Low operating and installation costs
- + Robust PCT panel: dust and water proof (IP65)



## WT22M-FI

**Dimensions** 526 x 333 x 33 mm (WxHxD)

**Weight** 6kg

**Mass Storage** 2.5" SATA III HDD x1  
(optional 2.5" SATA SSD x1)

**CPU** Intel® 2nd and 3rd generation Intel® Core™ i3, i5, i7 mobile processor TDP≤35W

**Chipset** Intel® QM77

**Memory** Supports: 2 x DDRIII SO-DIMM (Max 8G)

**LAN** Single Intel Gigabit Ethernet  
10/100/1000  
Built-in WiFi antenna (optional Wi-Fi card b/g/n)

**Audio** Realtek ALC886

**Mini-Card Slot** Full size x1 (support mSATA), Half size x1

**LCD** Default Resolution : 21.5" (1920x1080)  
Maximum Brightness : 250 Nits

**Aspect Ratio/Resolution** 16:9/Full HD

Supports:



### Touch Panel

PCT Multi Touch Surface (10 point touch)  
Pencil Hardness 7H per ASTM D3363  
Pen Hitting: more than 20,000,000 times (loading 180g)

### Speakers

Built-in 2W Stereo Speaker

### Webcam

Built-in 1.3M

### Security

Hidden keypad  
Secure cable and port cover  
Concealed on/off controls

### System I/O

DC 19.5V Jack x1  
RS232 Port (Monitor) x2  
HDMI Out Port x1  
RJ45 LAN Jack x1  
USB 2.0 x6  
USB 3.0 x2  
Line-out x1, Mic-in x1

### Front Panel

IP65 grade Dust- & Waterproof

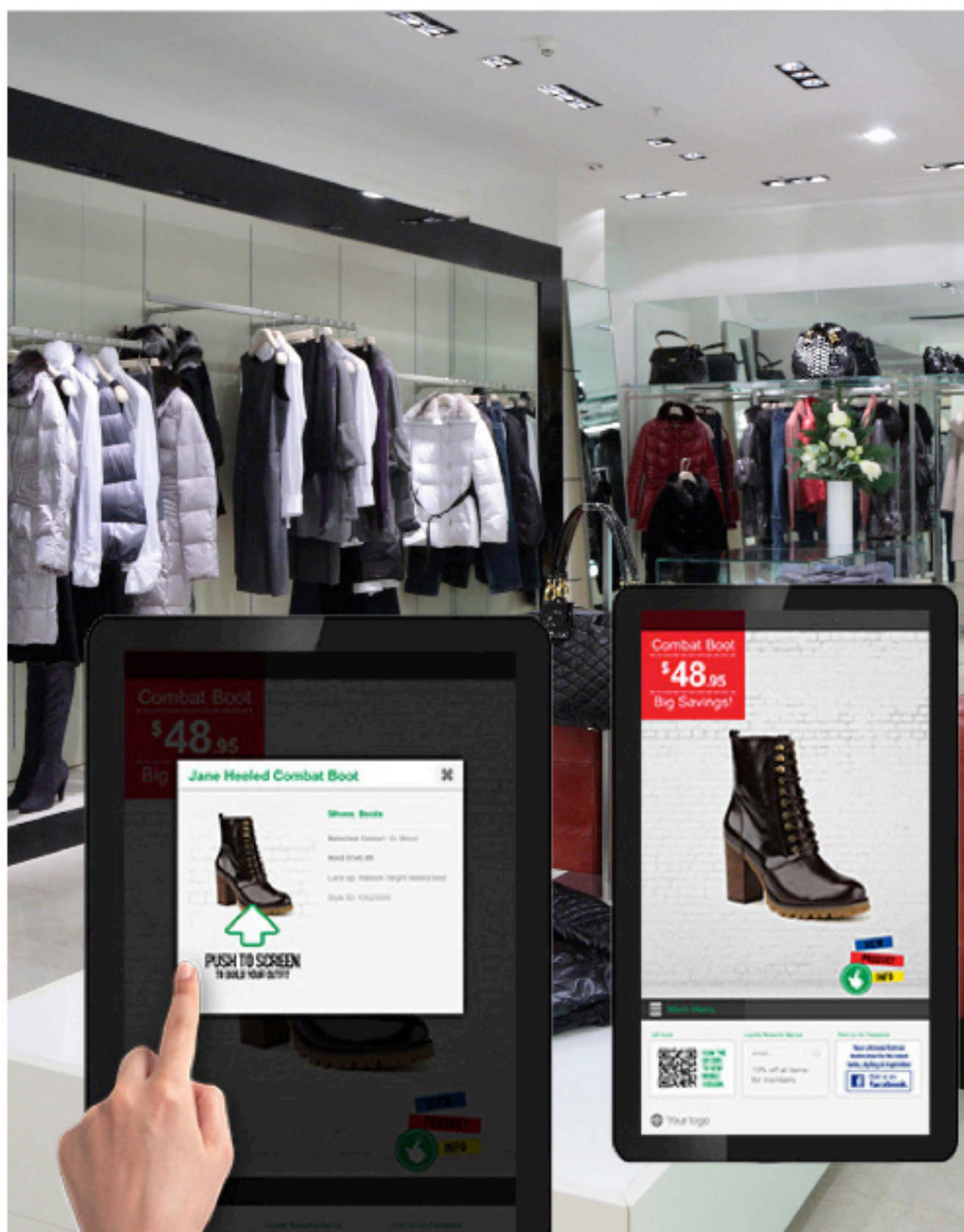
### Watchdog Timer

1 sec ~ 255 sec

### Accessories

Wall Mount Kit x1  
120W Power Adapter x1  
Power Cord x1  
Utilities & Drivers CD x1





# Built for Retail

The eTILE is highly robust with built-in cable management so that no ports are visible to the customer, making the device totally secure and tamperproof. It's also dust resistant and waterproof, and has a keen sense of style and aesthetic detail, with a slick Piano Black construction that will enhance any shopper's experience. It's the kind of device that customers will want to play with, and one that retailers can have the confidence in letting them touch.

Stephen Borg, Global Director of Strategy & Market Development at AOPEN, says "The eTILE will revolutionise retail. It's an industrial strength device in an exceptionally powerful, thin form-factor that simply doesn't exist elsewhere in the market today. Simple, powerful and affordable, it solves the two biggest barriers to digital signage adoption: cost and complexity. It's the first of its kind, a truly multipurpose solution that heralds a new era for retail," Borg says.



# Bunnings Stores Adopt Digital

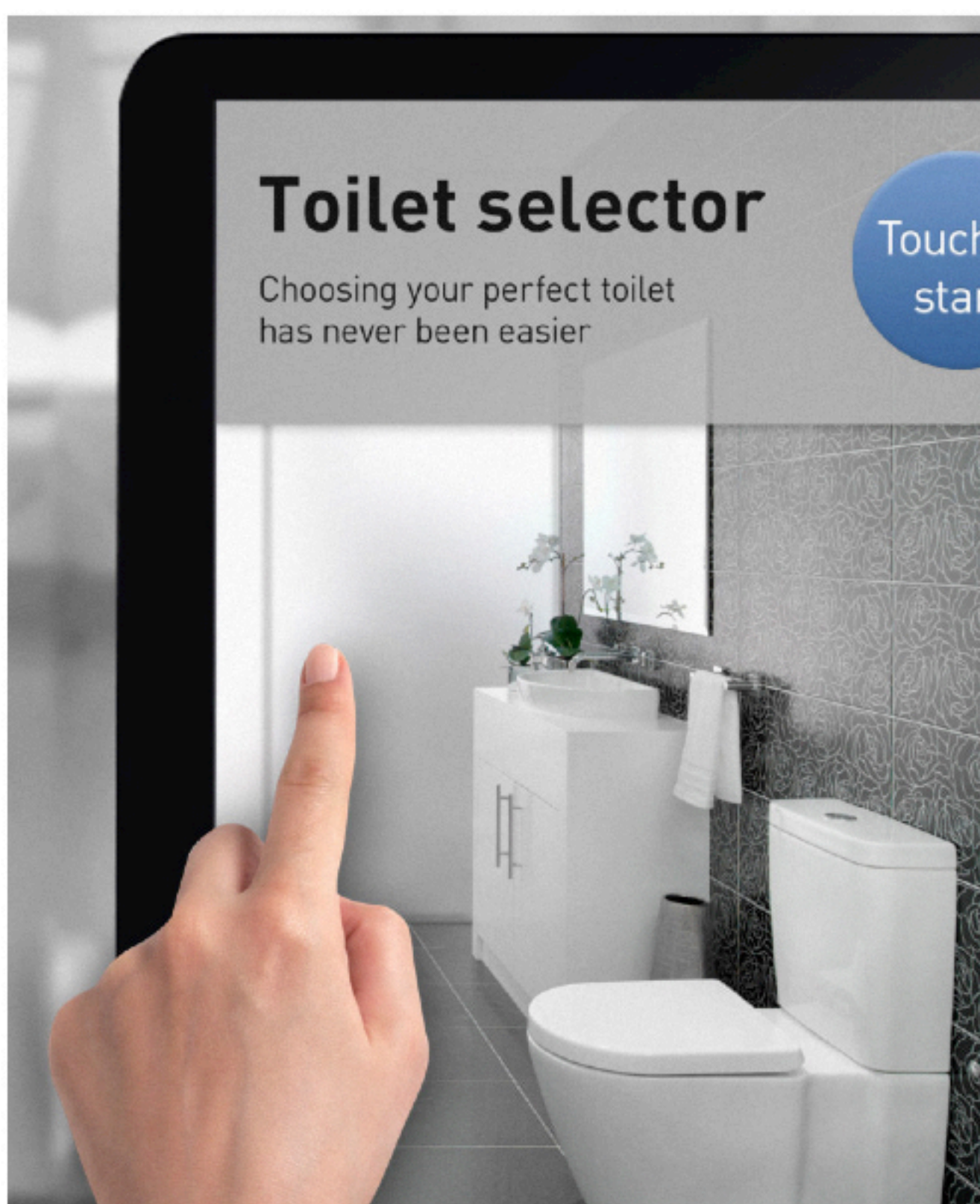
GWA Group, a manufacturer of bathroom and kitchen products, is now able to present its range of toilets across big-box retailer Bunnings' stores.

## Informative display

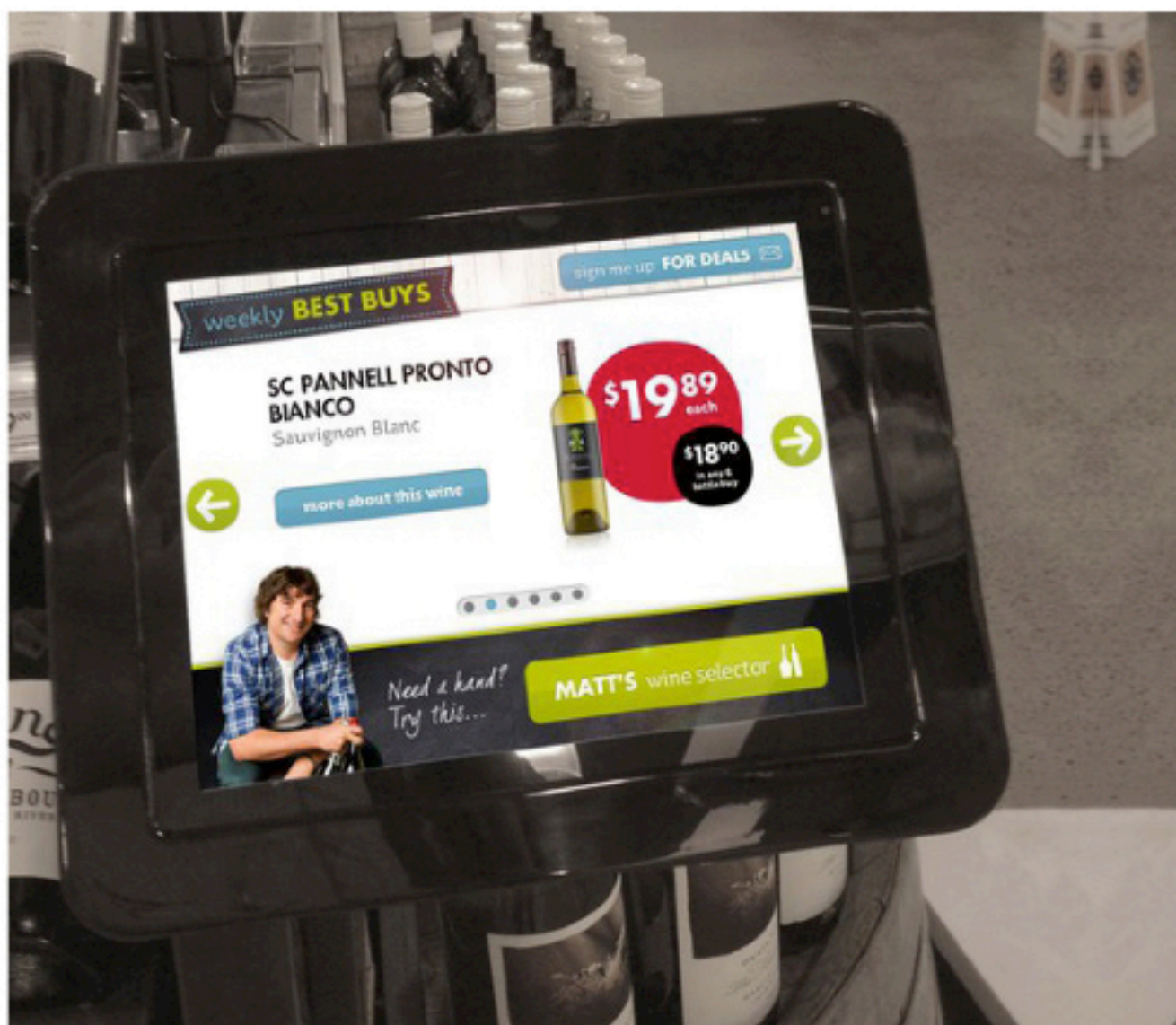
In such a large retail space, with staff constantly moving about the store, GWA wanted to provide that further level of assistance to its customers who were unsure of what product they required.

Utilising the eTILE, the toilet selectors are always current, constantly cheaper, and more adaptable than any brochure, and have the ability to evolve and integrate with other systems over time.

The eTILE is easy to mount onto any shelf or wall and thanks to its eye catching design: it invites to touch.







# First Choice Liquor

Increased customer interactivity through self-service tablet

Part of a synchronized omni-channel customer campaign this self-service tool assists customer with selection of the most appropriate wines.

Web-based content delivered to touch-screens instore. Operates in online or offline modes.

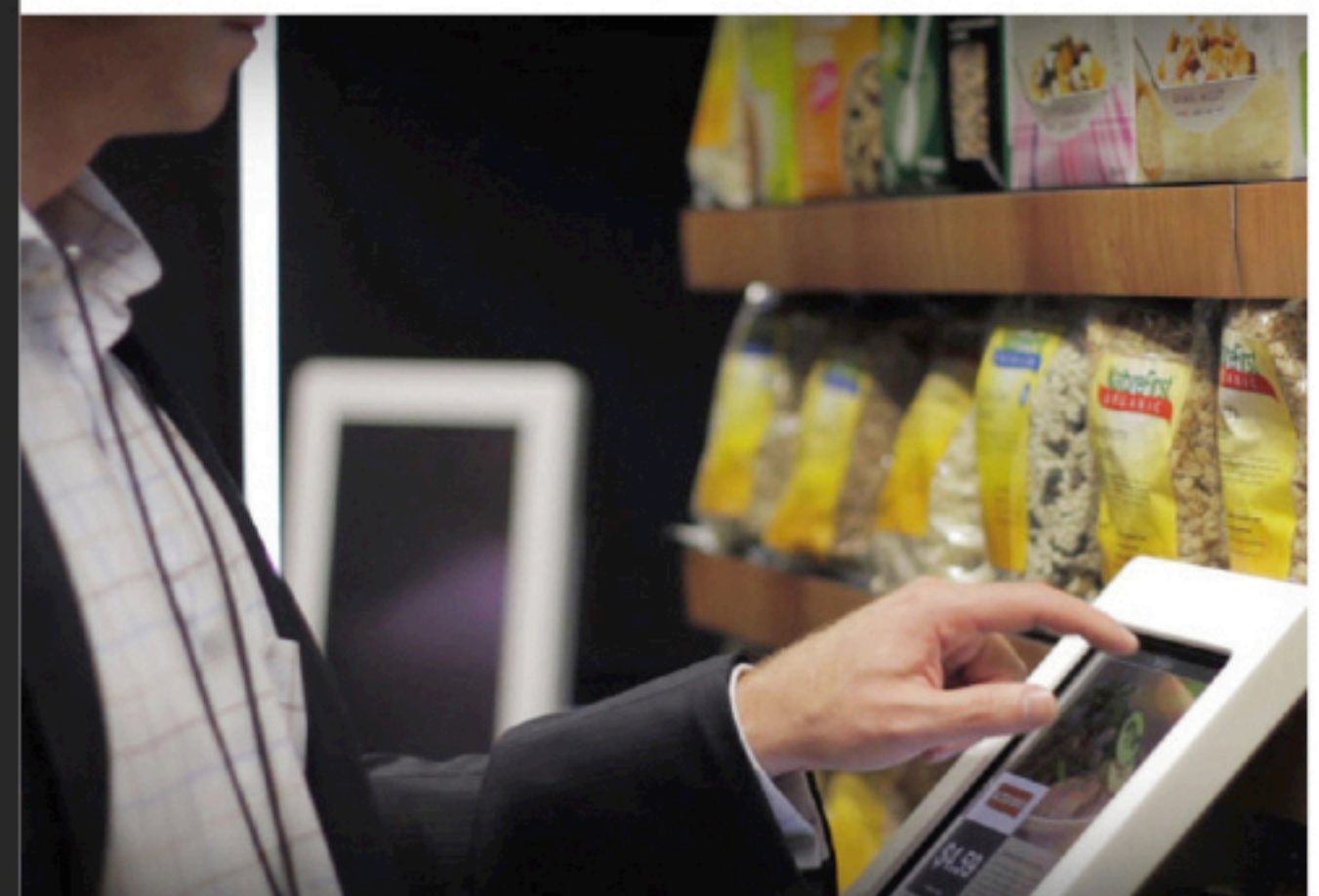
- + Improve customer satisfaction by using the handy wine selector
- + Enable advertising revenue through offering commercial advertising space for video clips
- + Add extra entertaining information to enhance the shopping experience

# OpenHealth

A key way to deliver pharmacy-style advice in-store by searching via pain symptom while allowing customers to share information via email or SMS to their smart-phone or subscribe for more information.

Capture opt-in customers, measure and track user behavior. Glean insights into user concerns and preferences.

- + Customers explored information by ailment or brand- about 25% more by ailment
- + Customer could share information from the screens, 70 preferred SMS over email 30%.





**Contact Us:**  
**digitalsignage@aopen.com**  
**www.aopen.com**

## **AOPEN EUROPE**

Stadionlaan 151-153  
5246 JT Rosmalen  
The Netherlands

Tel: (+31) 73 646 6400



### **AOPEN North & South America**

2890 Zanker Road, Suite 101  
San Jose, CA 95134  
USA

Tel: (+1) 408-586-1201

### **AOPEN Asia & Pacific**

No.68, Ruiguang Rd.  
Neihu District  
Taipei, 114, Taiwan

Tel: (+886) 2 7710 1195

### **AOPEN Europe**

Stadionlaan 151-153  
5246 JT Rosmalen  
The Netherlands

Tel: (+31) 73 646 6400

### **AOPEN China**

NO. 1698, Yishan Road,  
301 Room, Xing Di Building,  
Shanghai, China

Tel: (+86) 216 225 8622

### **AOPEN Australia & New Zealand**

Level 2, 6 Palmer Parade  
Cremorne, Victoria  
3121, Australia

Tel: (+61) 3 9427 7379

### **AOPEN Japan**

3F, Daiichi-denpa Bldg, 2-4-4,  
Sotokanda, Chiyoda-ku,  
Tokyo 101-0021 Japan

Tel: (+81) 3 52 981 668